

# KYLE R. LONG SCHOLARSHIP FUND



*A component fund of the*

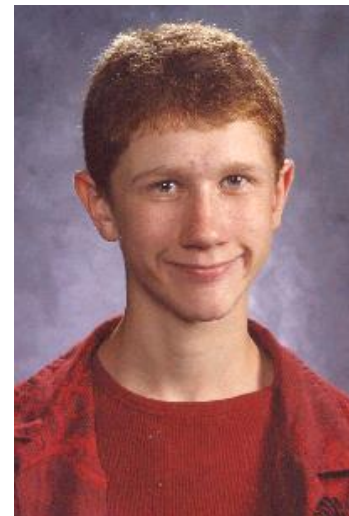
## PURPOSE

The purpose of the Kyle R. Long Scholarship Fund is to perpetuate the memory of Kyle through the awarding of an annual scholarship. Its primary purpose is to encourage students from the Medford area with special educational needs and learning disabilities to pursue educational training beyond high school in any field of study.

## BACKGROUND

The Kyle R. Long Scholarship Fund was established by his father and stepmother, Russell and Sharon Long, within the Community Foundation of North Central Wisconsin shortly after his death in 2004. The fund is designed to award scholarships annually in his name to graduating seniors with special educational needs and learning disabilities in the Medford area.

Kyle was born on September 1, 1987 and lived in Medford his whole life. Kyle was a member of Holy Rosary Catholic Church where he participated in the CCD program. He enjoyed downhill skiing, snowmobiling, and water sports. He took part in Special Olympics bowling, track, and basketball. He attended Medford Area Schools and had completed his sophomore year at the time of his death. Russell and Sharon established this fund to honor the special person that Kyle was during his lifetime and to keep his spirit alive within his community through the annual awarding of this scholarship.



***Kyle R. Long***

*September 1, 1987 - July 3, 2004*

## APPLICATION PROCESS

Students are encouraged to apply online by visiting the Community Foundation's website at [www.cfoncw.org](http://www.cfoncw.org). Click the "Apply Now" / Grants Scholarships button on the top menu bar; then go to the left-side menu and click on "Scholarships;" you can then click on the "Apply Online" button anywhere you see it on the page to reach the online application portal and begin the registration and application process. If this is your first visit to the site, you will need to "Create an Account." If this is a return visit, enter your email address and password. Completed applications must be submitted by **February 15** to be considered by the Selection Committee. Information will be held in the confidence of the Selection Committee, the Community Foundation's board of directors, and its staff.

## APPLICATION WILL INCLUDE

In addition to answering the questions on the application, students will be required to provide:

- Transcript of grades
- Extracurricular Activities Listing (which can be downloaded from the website)
- Two reference letters (including one from the primary case advisor, teacher, or counselor)

## **CRITERIA FOR SELECTION**

It is the intention of Russell and Sharon Long and the Community Foundation to award this scholarship in honor of Kyle on an annual basis. If no students apply or qualify meeting the first level of criterion, the Selection Committee will award the scholarship based on the second level of criteria. To be considered for the Kyle R. Long Scholarship, applicants must meet the following criterion:

### **First Selection Level:**

- ◆ Be a graduating senior from the Medford area;
- ◆ With special educational needs or a learning disability;
- ◆ Planning to pursue a post-secondary education in any field of study at any institution of higher education;
- ◆ Financial need may be a factor in the selection process.

Students who do not meet the above stated criteria are encouraged to apply. If the committee is unable to award the scholarship to a student meeting the above stated criteria, the scholarship will be awarded based on the following criteria.

### **Second Selection Level:**

- ◆ Be a graduating senior from the Medford area;
- ◆ Planning to pursue a career working with people with special educational needs or learning disabilities;
- ◆ Financial need may be a factor in the selection process.

### **Third Selection Level:**

- ◆ A hardworking graduating senior from the Medford area;
- ◆ Planning to pursue a post-secondary education in any field of study at any institution of higher education;
- ◆ Student must demonstrate financial need.

## **ANNOUNCEMENT OF THE AWARD AND PAYMENT**

The scholarship recipient will be announced at his/her senior awards ceremony in the spring. The student will receive official notification on how to initiate their scholarship payment from the Community Foundation office after the presentation of the award.

The Community Foundation will make payment of scholarship funds directly to the institution of higher education the student plans to attend. The scholarship recipient must provide proof of registration to the Community Foundation office for payment to be initiated.

## **CONTINUED FUNDING**

This scholarship may be awarded to the recipient for a second year. Students are asked to submit an application for continued funding.

## **DONATIONS ACCEPTED**

Tax-deductible donations can be made to this fund at any time and in any amount. Make checks payable to the Community Foundation of North Central Wisconsin, with a notation on the memo line that the gift should be directed to the Long Scholarship Fund. The family will be notified of your thoughtful gift.

Questions or requests for further information can be directed to the Community Foundation office.

## **Community Foundation of North Central Wisconsin**

500 First Street, Suite 2600, Wausau, WI 54403  
715.845.9555 / [info@cfoncw.org](mailto:info@cfoncw.org) / [www.cfoncw.org](http://www.cfoncw.org)